

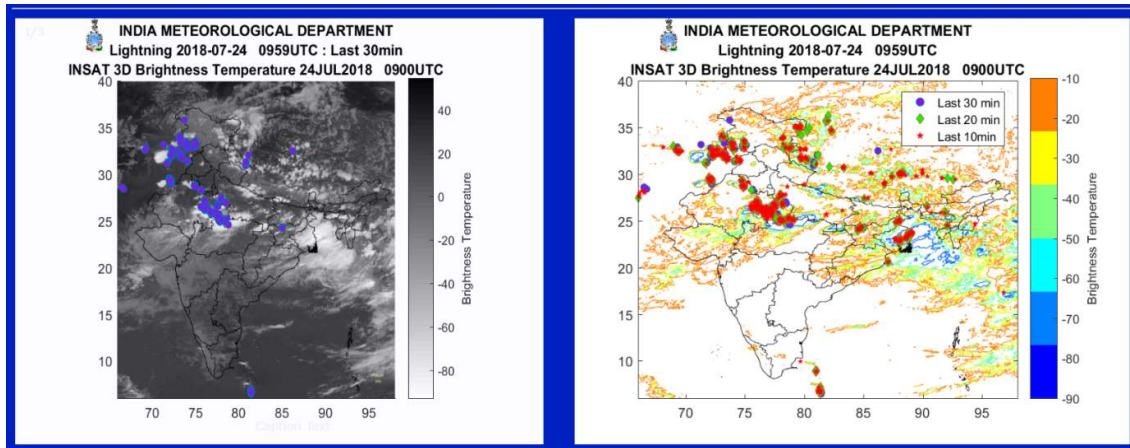


## INDIA METEOROLOGICAL DEPARTMENT Ministry of Earth Sciences

### Product Description

The merged product of lightning and satellite-based cloud with INSAT-3D data is a real-time product with half an hour animation. In this image and animation, lightning data is divided into the 3 different time categories 10, 20 and 30 minutes in different colors. It is updated every 15-minutes. However, data frequency is every 2-minutes from IITM and every 15 minutes from IAF. The time gap between satellite and lightning data will be around 1 hours. This is due to the satellite scan strategy.

The timing of 10, 20 and 30 minutes have been considered from the lightning data received and shown in the image. For example in the image shown below, Last 10 minutes=0959 UTC to 0949UTC, Last 20 minutes=0949 UTC to 0939UTC and Last 30 minutes=0939 UTC to 0929UTC, observation of lightning are merged with INSAT-3D imagery of 0900UTC.



The points are lightning flashes/strikes (cloud-to-ground) which is being generated by the ground networks. These flashes/strikes are also superimposing on INSAT-3D cloud top temperature as shown in the figure (right).

For any information contact: [ak.mitra@imd.gov.in](mailto:ak.mitra@imd.gov.in)