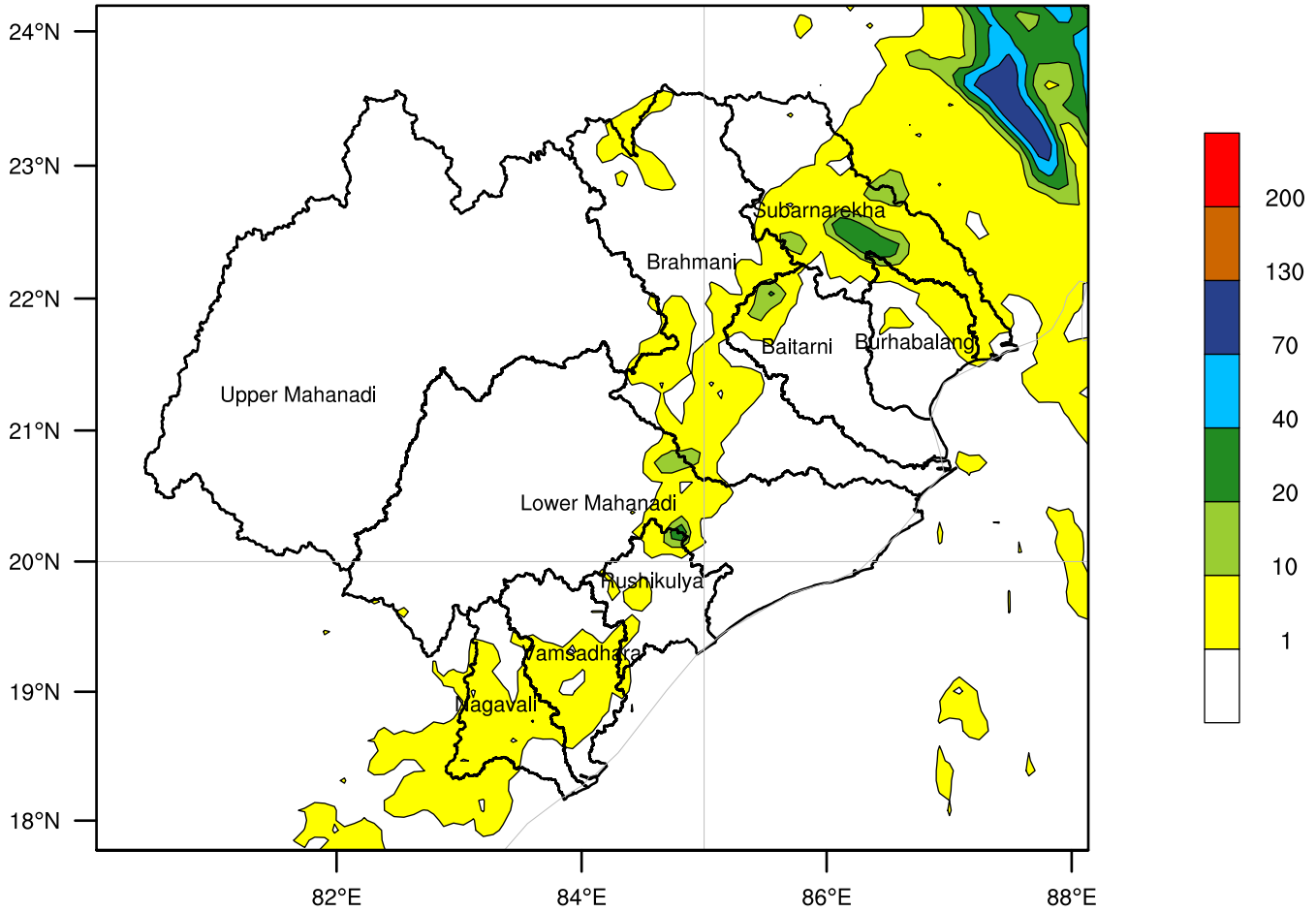


Init: 2017-05-16_00:00:00
Valid: 2017-05-17_03:00:00

FLOOD MET OFFICE BHUBANESWAR

IMD WRF Rainfall (mm) Forecast(24hr)



Sub basin wise Average Rainfall Estimation

Baitarni =	1 mm
Brahmani =	1 mm
Burhabalang =	1 mm
Lower Mahanadi =	0 mm
Nagavali =	2 mm
Rushikulya =	1 mm
Subarnarekha =	5 mm
Upper Mahanadi =	0 mm
Vamsadhara =	2 mm

OUTPUT FROM WRF V3.6.1 MODEL
WE = 1001 ; SN = 945 ; Levels = 45 ; Dis = 9km ; Phys Opt = 4 ; PBL Opt = 2 ; Cu Opt = 5