



**Government of India  
Ministry of Earth Sciences  
Earth System Science Organisation**



**Earth System Science Organisation  
India Meteorological Department**

## **PRESS RELEASE-5**

**Time of issue: 1300 hours IST**

**Dated: 10-08-2019**

### **Sub: Depression weakened into well marked low pressure area over southeast Rajasthan & neighbourhood**

Yesterday's depression over West Madhya Pradesh & adjoining East Rajasthan moved west-northwestwards and weakened into a well marked low pressure area over southeast Rajasthan & neighbourhood in the same evening (1730 IST) of 9<sup>th</sup> August. The Well Marked Low Pressure Area now lies over northern parts of Gujarat region & adjoining south Rajasthan at 03 UTC of today, 10<sup>th</sup> August 2019.

### **Warnings:**

#### **❖ Heavy rainfall warning**

Heavy to very heavy rainfall at a few places with extremely heavy falls very likely at isolated places over Saurashtra & Kutch. Heavy to very heavy rainfall likely at isolated places over Tamilnadu, Puducherry & Karaikal, Kerala, Coastal Karnataka, South Interior Karnataka, Konkan & Goa and Gujarat Region and Heavy rainfall at isolated places over Lakshadweep, North Interior Karnataka, Madhya Maharashtra, Himachal Pradesh, Uttarakhand, Rajasthan and Andaman & Nicobar Islands.

#### **❖ Wind warning**

Strong winds, speed reaching 40-50 kmph are likely to prevail over southwest, central and northeast, Arabian Sea and along & off Kerala, Karnataka, Goa, Maharashtra, Gujarat coasts, Lakshadweep area, Tamilnadu coasts, West Bengal-Odisha coasts and Andaman Sea. Fishermen are advised not to venture into these areas.

**This is last Press Release in association with this system. However, regular bulletins shall continue to be issued from National Weather Forecasting Centre, New Delhi and Meteorological Centre at Jaipur.**

For details kindly visit [www.imd.gov.in](http://www.imd.gov.in), [www.rsmcnewdelhi.imd.gov.in](http://www.rsmcnewdelhi.imd.gov.in) or [https://mausam.imd.gov.in/imd\\_latest/](https://mausam.imd.gov.in/imd_latest/)

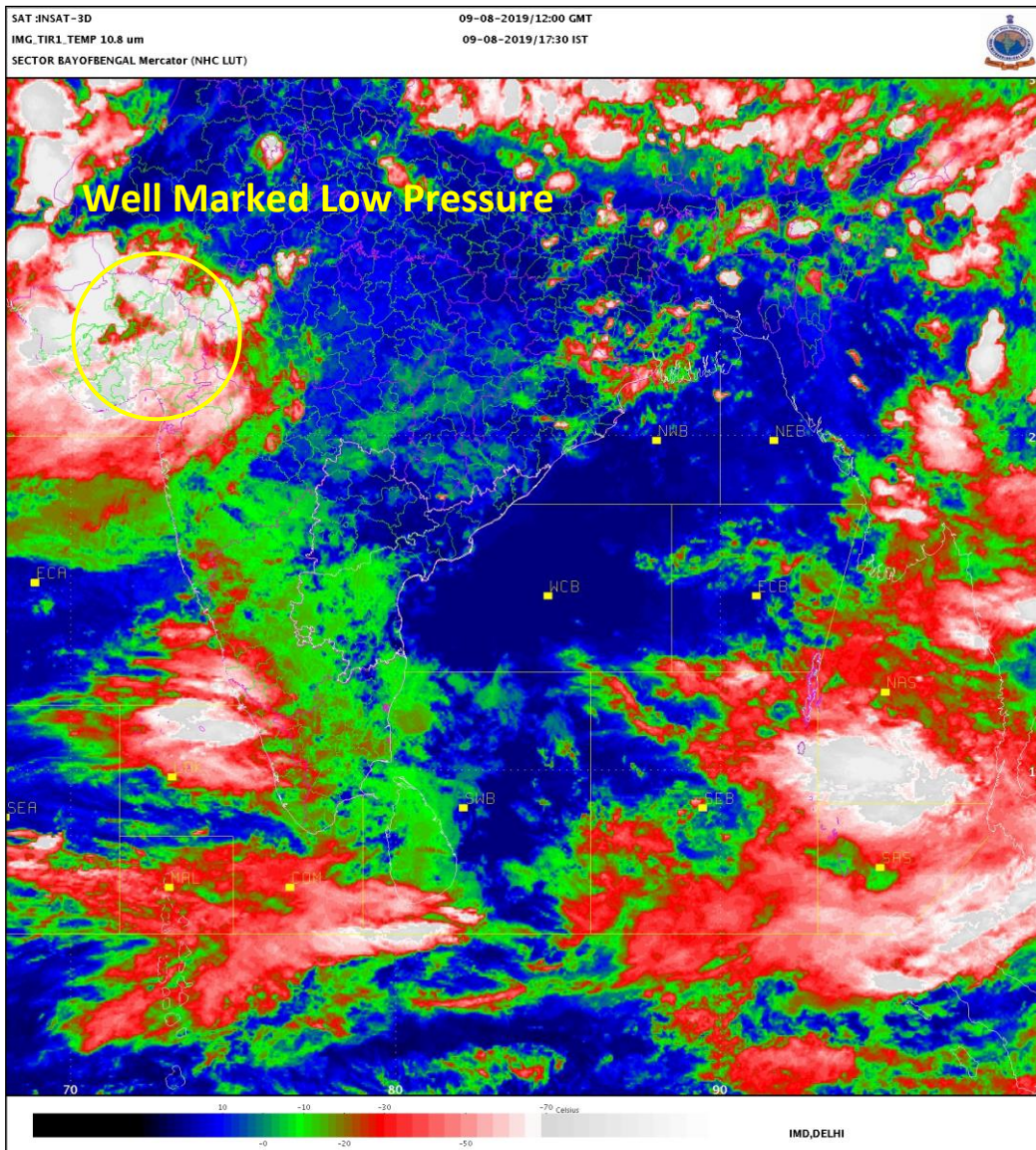
---

Contact: Cyclone Warning Division, Office of the Director General of Meteorology,  
India Meteorological Department, Ministry of Earth Sciences.

Phone: (91) 11-24652484, FAX: (91) 11-24643128, 24623220, E-mail: [cwdhq2008@gmail.com](mailto:cwdhq2008@gmail.com), Website: [rsmcnewdelhi.imd.gov.in](http://rsmcnewdelhi.imd.gov.in)

Spatial rainfall distribution: Isolated: <25%, A few: 26-50%, Many: 51-75%, Most: 76-100%

Rainfall amount (mm): Heavy rain: 64.5 – 115.5, Very heavy rain: 115.6 – 204.4, Extremely heavy rain: 204.5 or more.



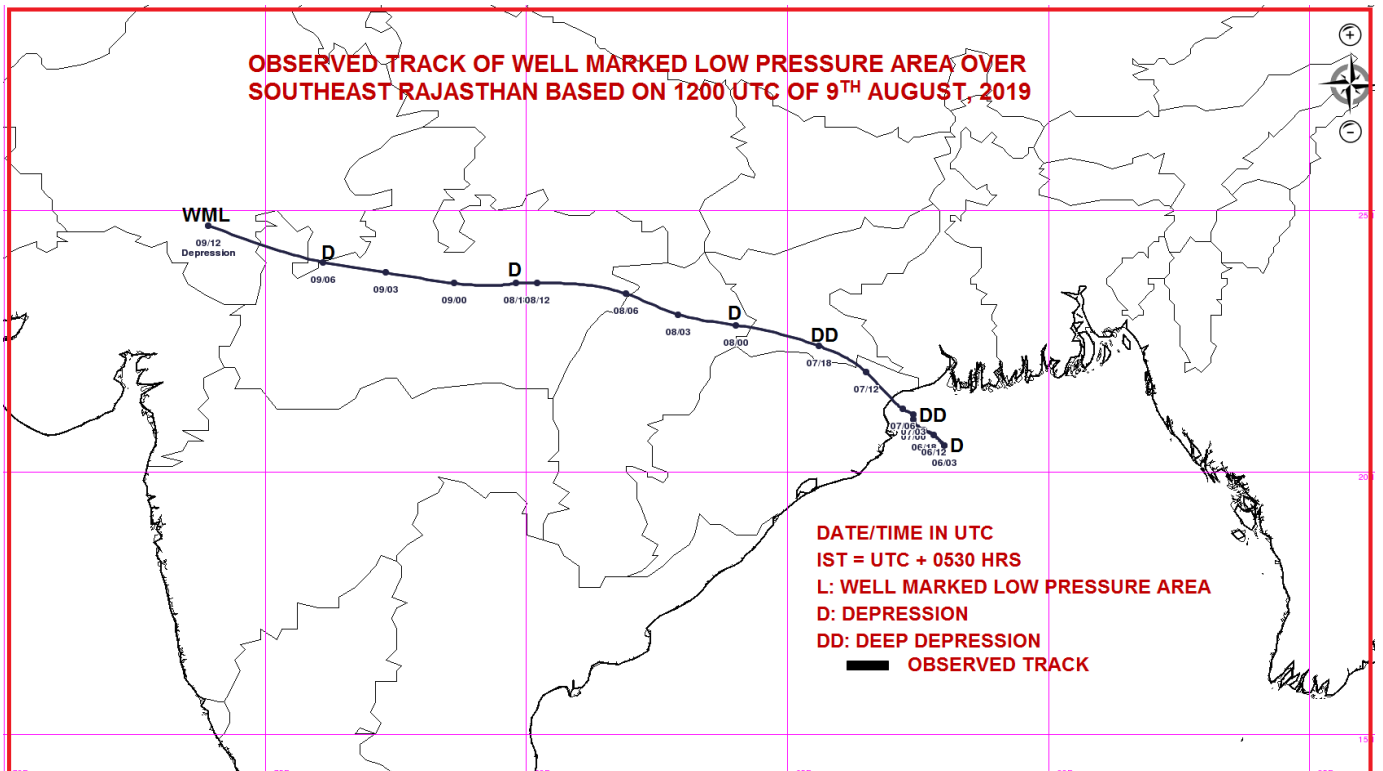
Contact: Cyclone Warning Division, Office of the Director General of Meteorology,  
 India Meteorological Department, Ministry of Earth Sciences.

Phone: (91) 11-24652484, FAX: (91) 11-24643128, 24623220, E-mail: [cwdhq2008@gmail.com](mailto:cwdhq2008@gmail.com), Website: [rsmcnewdelhi.imd.gov.in](http://rsmcnewdelhi.imd.gov.in)

Spatial rainfall distribution: Isolated: <25%, A few: 26-50%, Many: 51-75%, Most: 76-100%

Rainfall amount (mm): Heavy rain: 64.5 – 115.5, Very heavy rain: 115.6 – 204.4, Extremely heavy rain: 204.5 or more.

**OBSERVED TRACK OF WELL MARKED LOW PRESSURE AREA OVER  
SOUTHEAST RAJASTHAN BASED ON 1200 UTC OF 9<sup>TH</sup> AUGUST, 2019**



Contact: Cyclone Warning Division, Office of the Director General of Meteorology,  
India Meteorological Department, Ministry of Earth Sciences.

Phone: (91) 11-24652484, FAX: (91) 11-24643128, 24623220, E-mail: [cwdhq2008@gmail.com](mailto:cwdhq2008@gmail.com), Website: [rsmcnewdelhi.imd.gov.in](http://rsmcnewdelhi.imd.gov.in)

Spatial rainfall distribution: Isolated: <25%, A few: 26-50%, Many: 51-75%, Most: 76-100%

Rainfall amount (mm): Heavy rain: 64.5 – 115.5, Very heavy rain: 115.6 – 204.4, Extremely heavy rain: 204.5 or more.