



**Government of India
Ministry of Earth Sciences
Earth System Science Organisation**



**Earth System Science Organisation
India Meteorological Department**

PRESS RELEASE-6

Time of issue: 1430 hours IST

Dated: 08-01-2019

Sub: Depression over southeast Bay of Bengal and adjoining areas weakened into a low pressure area over Myanmar coast and neighbourhood

Yesterday's depression over southeast and adjoining eastcentral Bay of Bengal (BoB) & Andaman Islands moved nearly northwards till midnight. Thereafter moving northeastwards, it weakened into a well marked low pressure area over eastcentral BoB & adjoining north Andaman Sea and Myanmar coast in the early morning (0530 hours IST) and into a low pressure area over Myanmar coast and neighbourhood in the morning (0830 hours IST) of today, the 08th January, 2019.

Warnings:

No adverse weather warning in association with this system.

Realised rainfall:

Heavy rainfall occurred at isolated places over Andaman Islands on 6th.

Chief amount of realised rainfall (≥ 7 cm) on 6th had been Hut Bay-10 and Maya Bandar & Port Blair-7 each.

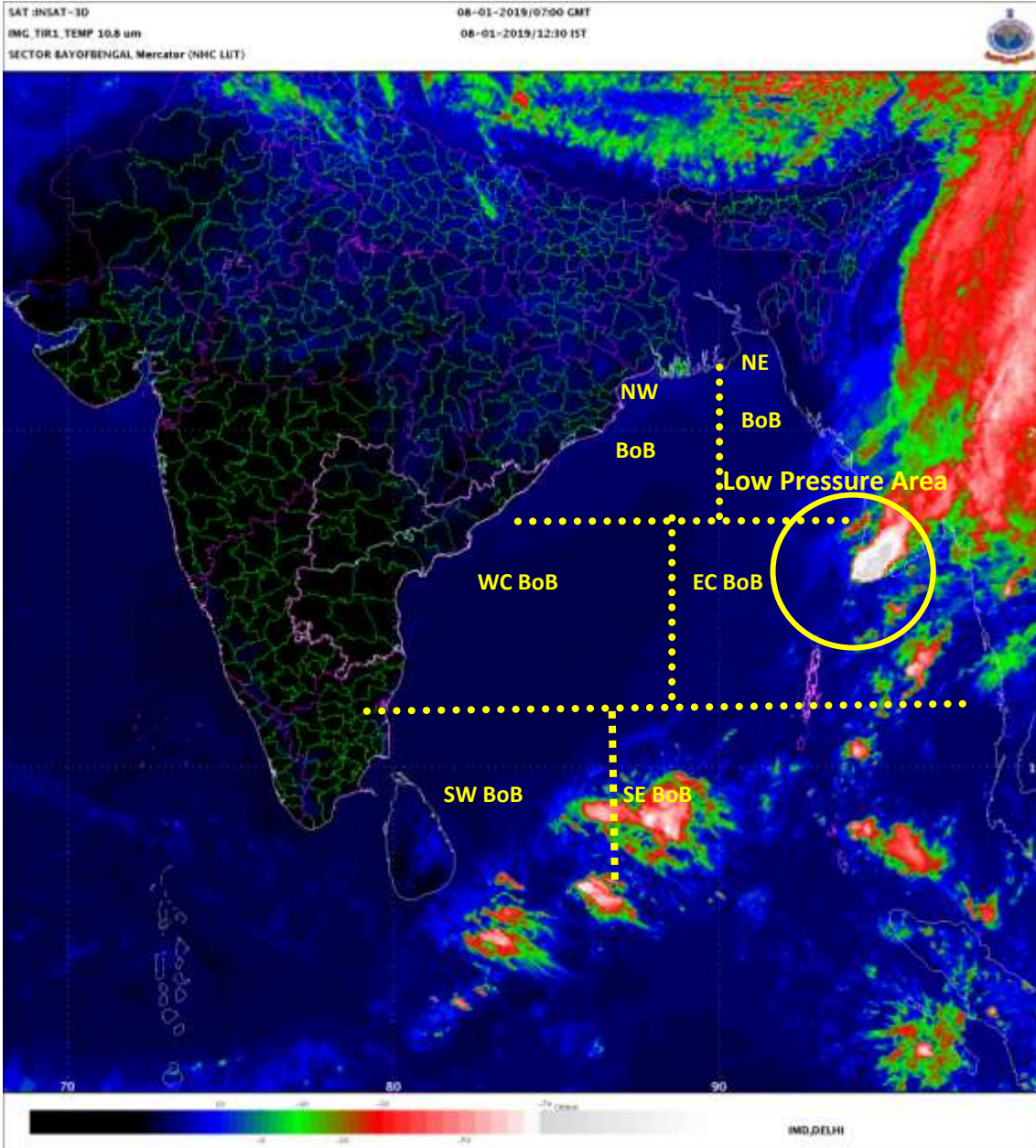
This is the last Press release with respect to this system. However, regular bulletins will continue from National Weather Forecasting Centre (NWFC), New Delhi and Regional Meteorological Centres/ Meteorological Centres.

Contact: Cyclone Warning Division, Office of the Director General of Meteorology,
India Meteorological Department, Ministry of Earth Sciences.

Phone: (91) 11-24652484, FAX: (91) 11-24643128, 24623220, E-mail: cwdhq2008@gmail.com, Website: rsmcnewdelhi.imd.gov.in

Spatial rainfall distribution: Isolated: <25%, A few: 26-50%, Many: 51-75%, Most: 76-100%

Rainfall amount (mm): Heavy rain: 64.5 – 115.5, Very heavy rain: 115.6 – 204.4, Extremely heavy rain: 204.5 or more.

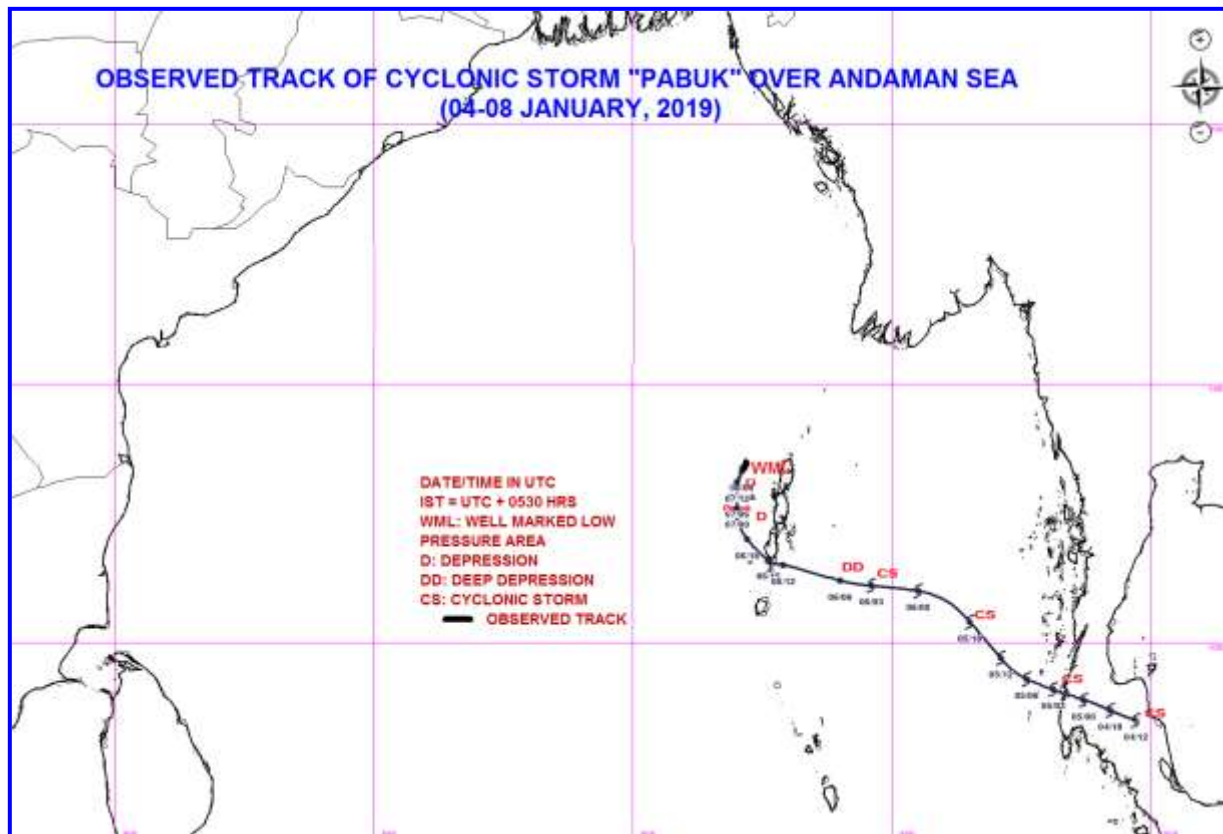


Contact: Cyclone Warning Division, Office of the Director General of Meteorology,
 India Meteorological Department, Ministry of Earth Sciences.

Phone: (91) 11-24652484, FAX: (91) 11-24643128, 24623220, E-mail: cwdhq2008@gmail.com, Website: rsmcnewdelhi.imd.gov.in

Spatial rainfall distribution: Isolated: <25%, A few: 26-50%, Many: 51-75%, Most: 76-100%

Rainfall amount (mm): Heavy rain: 64.5 – 115.5, Very heavy rain: 115.6 – 204.4, Extremely heavy rain: 204.5 or more.



Contact: Cyclone Warning Division, Office of the Director General of Meteorology,
 India Meteorological Department, Ministry of Earth Sciences.

Phone: (91) 11-24652484, FAX: (91) 11-24643128, 24623220, E-mail: cwdhq2008@gmail.com, Website: rsmcnewdelhi.imd.gov.in

Spatial rainfall distribution: Isolated: <25%, A few: 26-50%, Many: 51-75%, Most: 76-100%

Rainfall amount (mm): Heavy rain: 64.5 – 115.5, Very heavy rain: 115.6 – 204.4, Extremely heavy rain: 204.5 or more.