



**Government of India
Ministry of Earth Sciences
Earth System Science Organisation**



**Earth System Science Organisation
India Meteorological Department**

PRESS RELEASE-5

Time of issue: 1330 hours IST

Dated: 07-01-2019

Sub: Depression over southeast and adjoining eastcentral Bay of Bengal & Andaman Islands

Yesterday's cyclonic storm "PABUK" moved west-northwestwards and weakened into a deep depression over Andaman Sea around same noon. Moving further west-northwestwards, it crossed Andaman Islands as a deep depression with a wind speed of 55-65 kmph gusting to 75 kmph near latitude 11.6°N and longitude 92.7°E, close to south of Port Blair during late evening (1830 and 2030 hours IST) of yesterday, the 6th January, 2019.

Further, it moved north-northwestwards and weakened into a depression in the early morning (0530 hours IST) of today, the 7th January, 2019. Thereafter, it moved nearly northwards and lay centered at 0830 hours IST of today over southeast Bay of Bengal (BoB) and adjoining eastcentral BoB & Andaman Islands near latitude 12.8°N and longitude 92.0°E, about 150 km north-northwest of Port Blair. It is very likely to move northwards for some more time and then recurve northeastwards towards Myanmar coast. It is likely to weaken into a well marked low pressure area during next 12 hours.

Forecast track and intensity are given in the following table:

Date/Time(IST)	Position (Lat.°N/ long. E)	Maximum sustained surface wind speed (Kmph)	Category of cyclonic disturbance
07.01.19/0830	12.8/92.0	45-55 gusting to 65	Depression
07.01.19/1130	13.0/92.1	40-50 gusting to 60	Depression
07.01.19/1730	13.7/92.4	25-35 gusting to 45	Well marked low

Warnings:

(i) Heavy rainfall warning

Rainfall at most places with heavy rainfall very likely at isolated places over Andaman Islands during next 24 hours.

(ii) Wind warning

Squally wind speed reaching 45-55 kmph gusting to 65 kmph is very likely to prevail over southeast BoB, Andaman Islands and adjoining Andaman Sea & eastcentral BoB during next 06 hours and 40-50 kmph gusting to 60 kmph over eastcentral BoB and adjoining Andaman Sea during subsequent 06 hours.

(iii) Sea condition

Sea conditions is very likely to be rough to very rough over southeast BoB, around Andaman Islands during next 06 hours and rough to very rough over eastcentral BoB and adjoining Andaman Sea during next 12 hours.

(iv) Action suggested

Fishermen are advised not to venture into eastcentral BoB, north Andaman Sea and adjoining southeast BoB during next 12 hours.

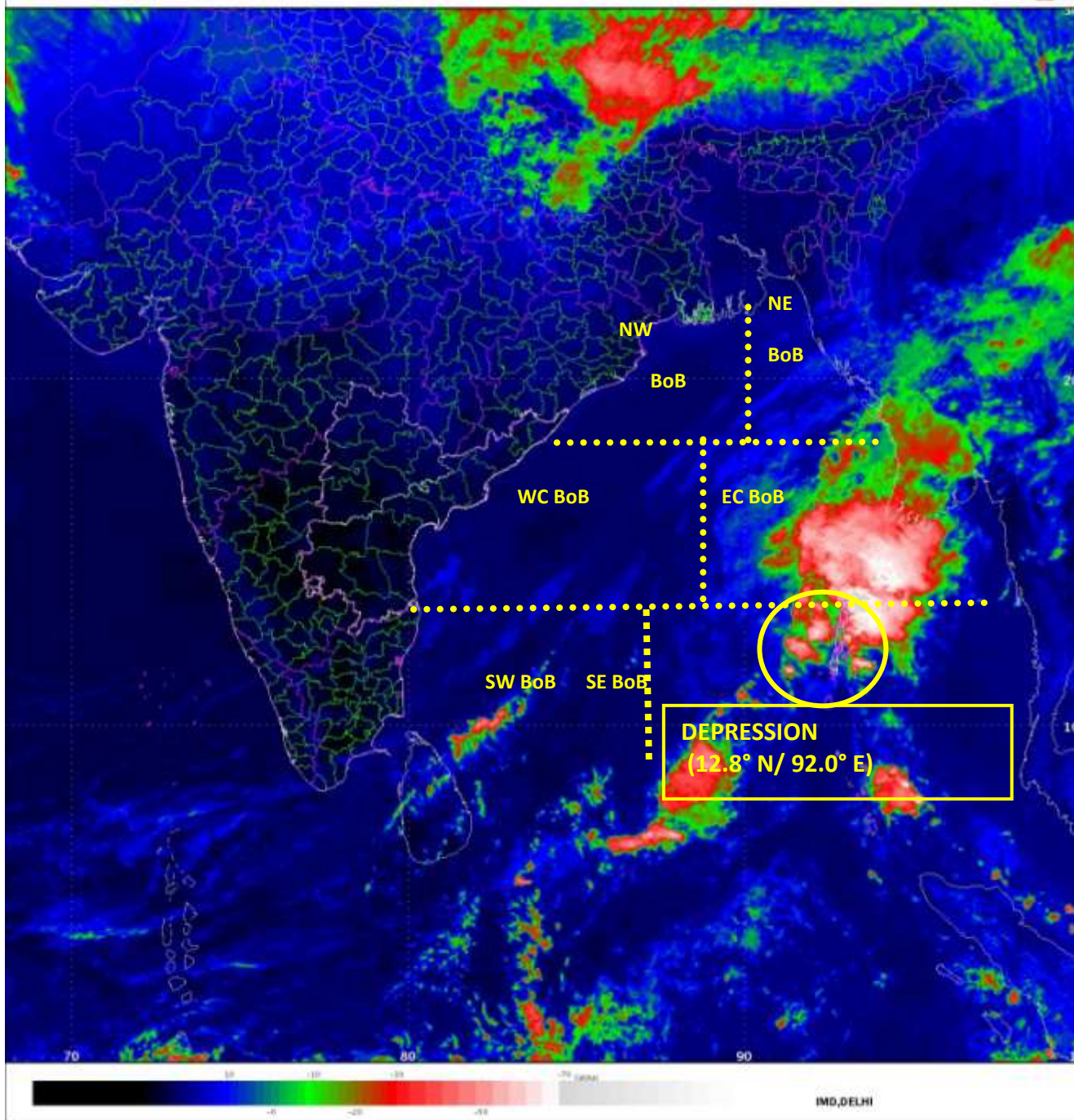
Next update will be issued tomorrow, the 8th January, 2019 at 1300 hrs IST. Kindly visit www.imd.gov.in and www.rsmcnewdelhi.imd.gov.in for further updates on the system.

**Contact: Cyclone Warning Division, Office of the Director General of Meteorology,
India Meteorological Department, Ministry of Earth Sciences.**

Phone: (91) 11-24652484, FAX: (91) 11-24643128, 24623220, E-mail: cwdhq2008@gmail.com, Website: rsmcnewdelhi.imd.gov.in

Spatial rainfall distribution: Isolated: <25%, A few: 26-50%, Many: 51-75%, Most: 76-100%

Rainfall amount (mm): Heavy rain: 64.5 – 115.5, Very heavy rain: 115.6 – 204.4, Extremely heavy rain: 204.5 or more.



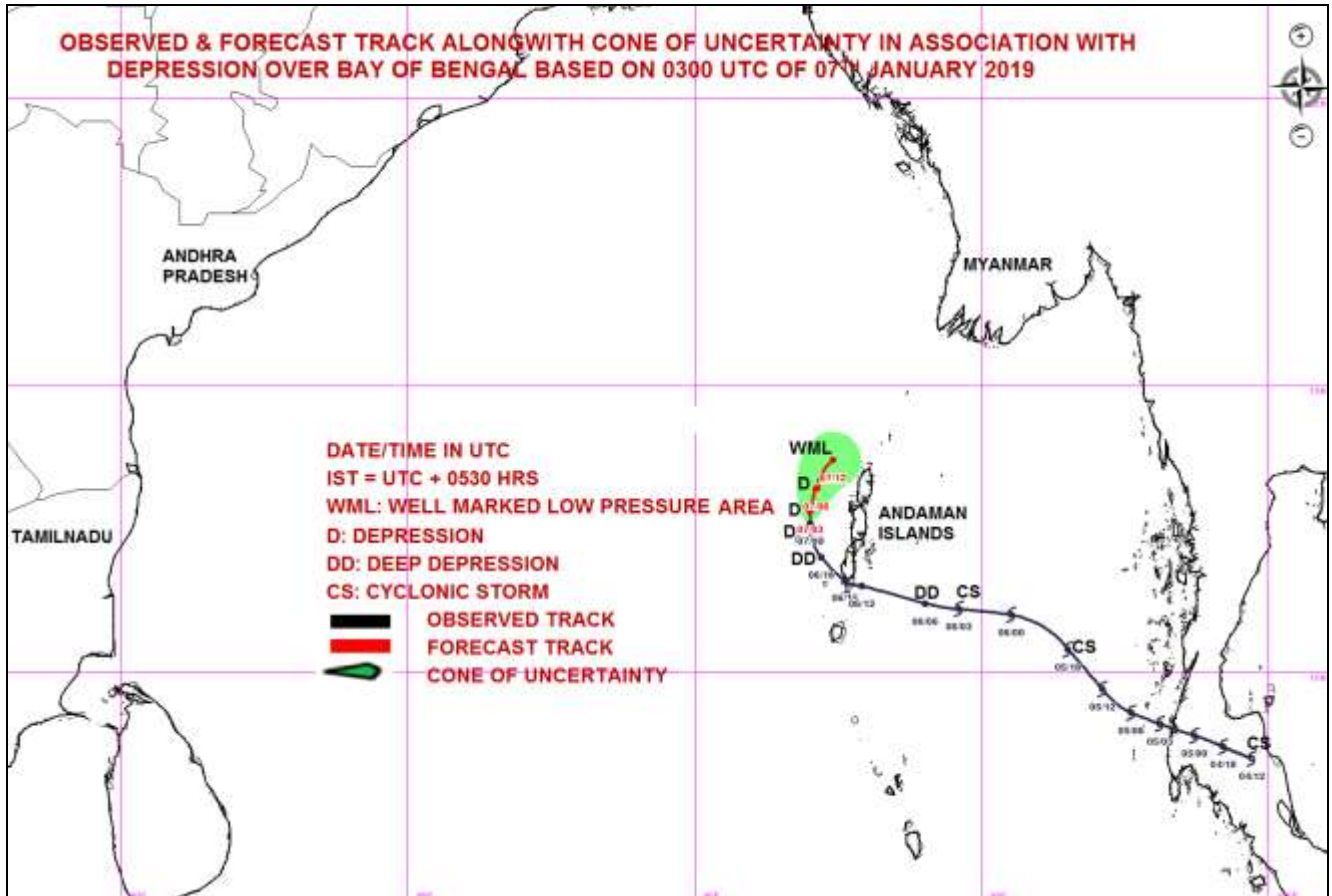
Contact: Cyclone Warning Division, Office of the Director General of Meteorology,
India Meteorological Department, Ministry of Earth Sciences.

Phone: (91) 11-24652484, FAX: (91) 11-24643128, 24623220, E-mail: cwdhq2008@gmail.com, Website: rsmcnewdelhi.imd.gov.in

Spatial rainfall distribution: Isolated: <25%, A few: 26-50%, Many: 51-75%, Most: 76-100%

Rainfall amount (mm): Heavy rain: 64.5 – 115.5, Very heavy rain: 115.6 – 204.4, Extremely heavy rain: 204.5 or more.

OBSERVED & FORECAST TRACK ALONGWITH CONE OF UNCERTAINTY IN ASSOCIATION WITH DEPRESSION OVER BAY OF BENGAL BASED ON 0300 UTC OF 07TH JANUARY 2019



Contact: Cyclone Warning Division, Office of the Director General of Meteorology,
 India Meteorological Department, Ministry of Earth Sciences.

Phone: (91) 11-24652484, FAX: (91) 11-24643128, 24623220, E-mail: cwdhq2008@gmail.com, Website: rsmcnewdelhi.imd.gov.in

Spatial rainfall distribution: Isolated: <25%, A few: 26-50%, Many: 51-75%, Most: 76-100%

Rainfall amount (mm): Heavy rain: 64.5 – 115.5, Very heavy rain: 115.6 – 204.4, Extremely heavy rain: 204.5 or more.