



**Government of India**  
**Ministry of Earth Sciences**  
**Earth System Science Organisation**



**Earth System Science Organisation**  
**India Meteorological Department**

## **PRESS RELEASE-4**

**Time of issue: 1300 hours IST**

**Dated: 06-01-2019**

### **Sub: Cyclonic Storm 'PABUK' over Andaman Sea**

Yesterday's cyclonic storm "PABUK" over Andaman Sea moved west-northwestwards and lay centered at 0830 hours IST of today, the 06<sup>th</sup> January, 2019 over the same region near latitude 11.1°N and longitude 94.6°E, about 210 km east-southeast of Port Blair. Due to unfavourable conditions, the system is very likely to weaken into a deep depression during next 06 hours and further into a depression during subsequent 12 hours.

It is very likely to continue to move west-northwestwards and cross Andaman Islands by tonight as a deep depression with a wind speed of 55-65 kmph gusting to 75 kmph. Thereafter, it is very likely to move north-northwestwards and then recurve northeastwards towards Myanmar coast and weaken gradually.

Forecast track and intensity are given in the following table:

<b>Date/Time(IST)</b>	<b>Position (Lat.°N/ long. °E)</b>	<b>Maximum sustained surface wind speed (Kmph)</b>	<b>Category of cyclonic disturbance</b>
06.01.19/0830	11.1/94.6	60-70 gusting to 80	Cyclonic Storm
06.01.19/1130	11.3/94.1	55-65 gusting to 75	Deep Depression
06.01.19/1730	11.8/93.1	55-65 gusting to 75	Deep Depression
06.01.19/2330	12.3/92.2	50-60 gusting to 70	Deep Depression
07.01.19/0530	13.0/92.1	40-50 gusting to 60	Depression
07.01.19/1730	14.0/92.8	25-35 gusting to 45	Well marked low

### **Warnings:**

#### **(i) Heavy rainfall warning**

Rainfall at most places with heavy to very heavy rainfall at a few places on today, the 6<sup>th</sup> January, 2019 and at heavy rainfall isolated places on 7<sup>th</sup> over Andaman Islands.

#### **(ii) Wind warning**

- Gale wind speed reaching 60-70 kmph gusting to 80 kmph is likely to prevail over Andaman Sea during next three hours.
- It is very likely to gradually decrease thereafter becoming 55-65 kmph gusting to 75 kmph over southeast Bay of Bengal, Andaman Islands and adjoining Andaman Sea & eastcentral Bay of Bengal till today, the 6<sup>th</sup> January 2019 night and 40-50 kmph gusting to 60 kmph over eastcentral and adjoining southeast Bay of Bengal by 7<sup>th</sup> morning.
- Squally wind speed reaching 40-50 kmph gusting to 60 kmph is likely to prevail over Nicobar Islands till today, the 6<sup>th</sup> January 2019 night.

**Contact: Cyclone Warning Division, Office of the Director General of Meteorology,  
India Meteorological Department, Ministry of Earth Sciences.**

**Phone: (91) 11-24652484, FAX: (91) 11-24643128, 24623220, E-mail: cwdhq2008@gmail.com, Website: [rsmcnewdelhi.imd.gov.in](http://rsmcnewdelhi.imd.gov.in)**

**Spatial rainfall distribution: Isolated: <25%, A few: 26-50%, Many: 51-75%, Most: 76-100%**

**Rainfall amount (mm): Heavy rain: 64.5 – 115.5, Very heavy rain: 115.6 – 204.4, Extremely heavy rain: 204.5 or more.**

**(iii) Sea condition**

- The sea condition will be high over Andaman during next three hours.
- Thereafter, it will become very rough over southeast Bay of Bengal, around Andaman Islands & adjoining Andaman Sea and eastcentral Bay of Bengal till today, the 6<sup>th</sup> January 2019 night and rough to very rough over eastcentral and adjoining southeast Bay of Bengal by 7<sup>th</sup> morning and improve thereafter.
- The sea condition will be rough to very over Nicobar Islands till 6<sup>th</sup> night.

**(iv) Damage Expected over Andaman Islands:**

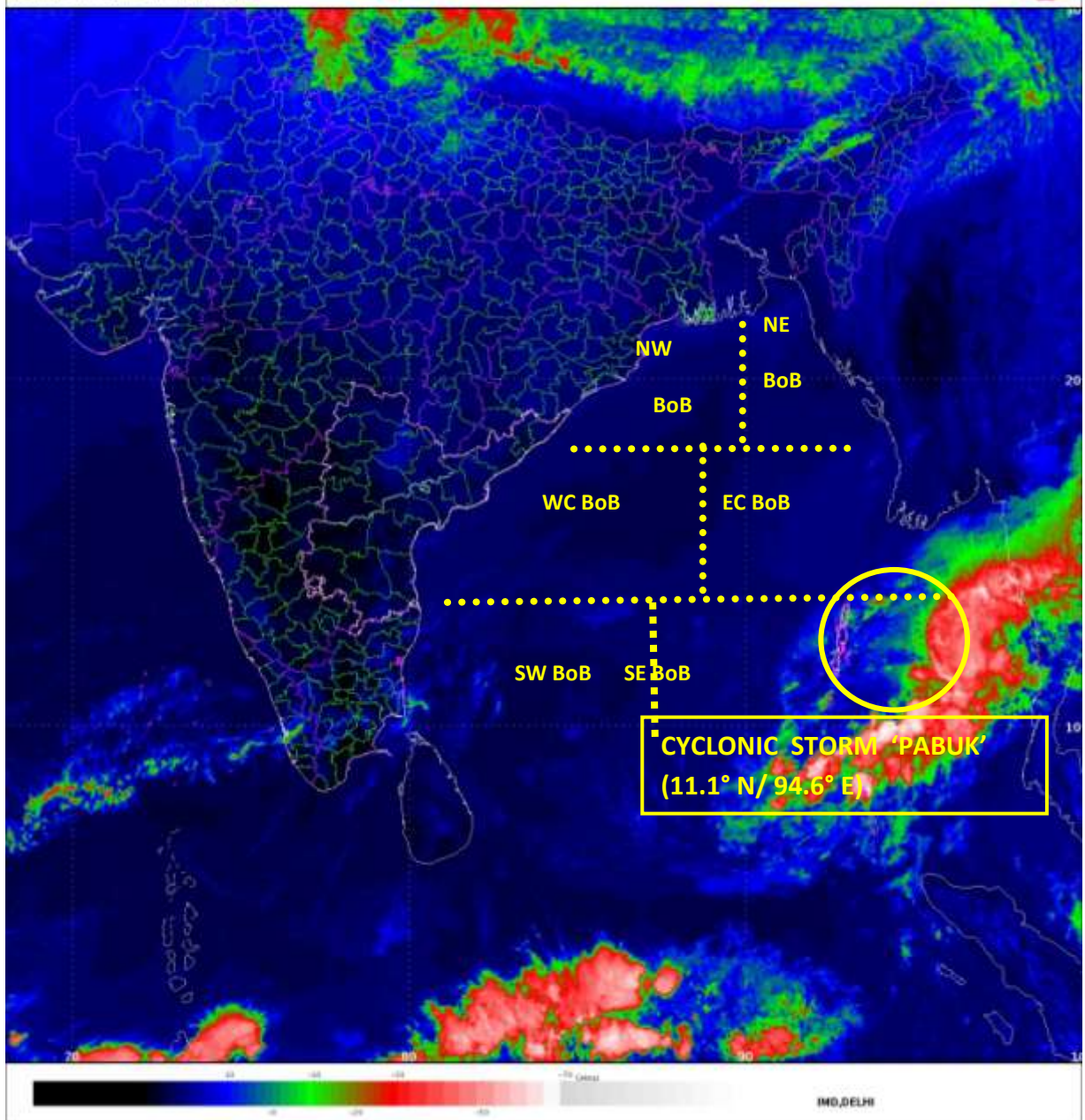
Minor damage to loose/unsecured structures and some breaches in Kutcha road due to flooding. Minor damage to Banana trees and near coastal agriculture due to salt spray. Damage to ripe paddy crops and minor damage to Kutcha embankments.

**(v) Action suggested**

- Total suspension of fishing operation over Andaman Sea and adjoining southeast and eastcentral Bay of Bengal till 7<sup>th</sup> January.
- Fishermen are advised not to venture into Andaman Sea and adjoining southeast and eastcentral Bay of Bengal during the same period.

The system is under continuous surveillance and concerned state Governments are being informed regularly.

Next update will be issued tomorrow, the 7<sup>th</sup> January, 2019 at 1300 hrs IST. Kindly visit [www.imd.gov.in](http://www.imd.gov.in) and [www.rsmcnewdelhi.imd.gov.in](http://www.rsmcnewdelhi.imd.gov.in) for updates on the system.

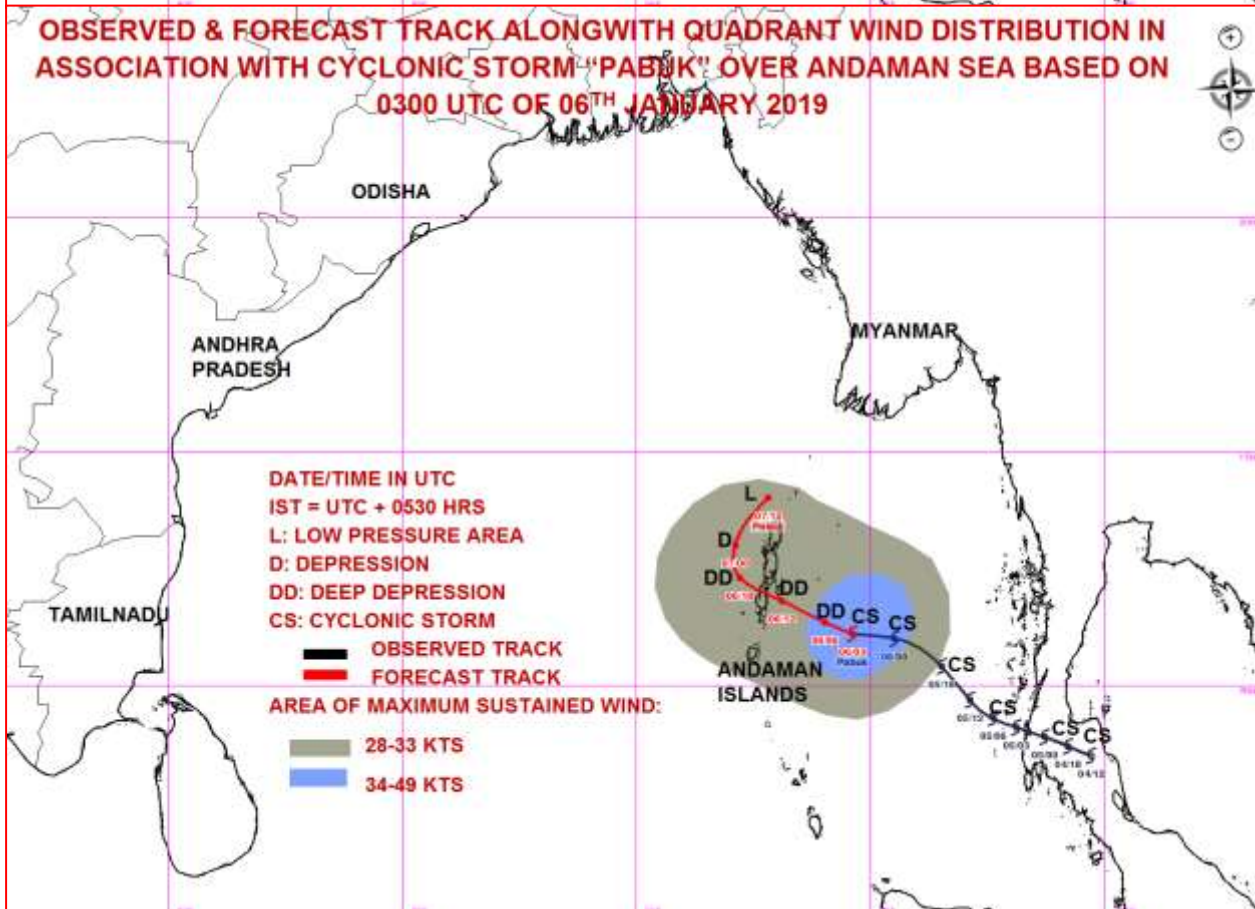
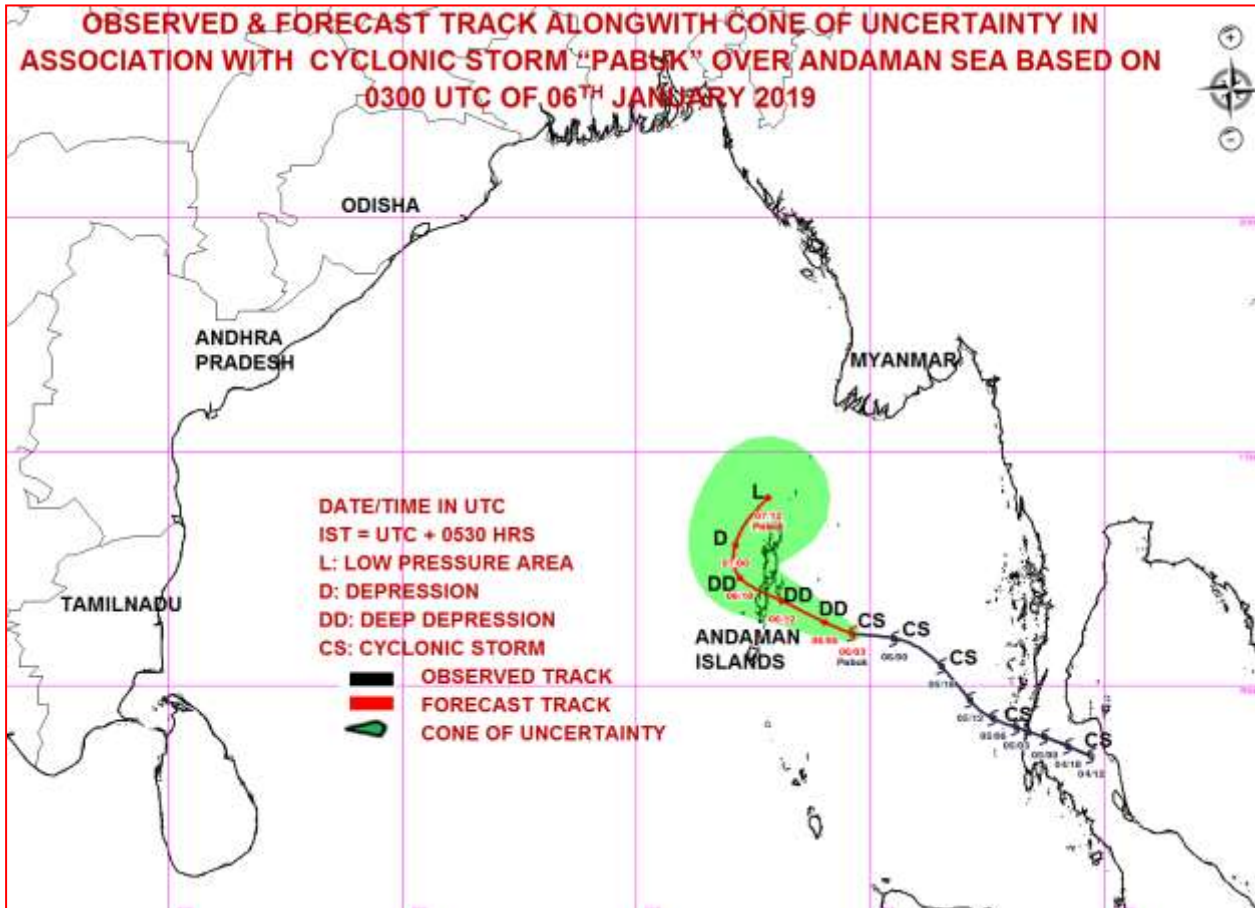


Contact: Cyclone Warning Division, Office of the Director General of Meteorology,  
India Meteorological Department, Ministry of Earth Sciences.

Phone: (91) 11-24652484, FAX: (91) 11-24643128, 24623220, E-mail: [cwdhq2008@gmail.com](mailto:cwdhq2008@gmail.com), Website: [rsmcnewdelhi.imd.gov.in](http://rsmcnewdelhi.imd.gov.in)

Spatial rainfall distribution: Isolated: <25%, A few: 26-50%, Many: 51-75%, Most: 76-100%

Rainfall amount (mm): Heavy rain: 64.5 – 115.5, Very heavy rain: 115.6 – 204.4, Extremely heavy rain: 204.5 or more.



Contact: Cyclone Warning Division, Office of the Director General of Meteorology,  
India Meteorological Department, Ministry of Earth Sciences.

Phone: (91) 11-24652484, FAX: (91) 11-24643128, 24623220, E-mail: [cwdhq2008@gmail.com](mailto:cwdhq2008@gmail.com), Website: [rsmcnewdelhi.imd.gov.in](http://rsmcnewdelhi.imd.gov.in)

Spatial rainfall distribution: Isolated: <25%, A few: 26-50%, Many: 51-75%, Most: 76-100%

Rainfall amount (mm): Heavy rain: 64.5 – 115.5, Very heavy rain: 115.6 – 204.4, Extremely heavy rain: 204.5 or more.