



**Government of India
Ministry of Earth Sciences
Earth System Science Organisation**



**Earth System Science Organisation
India Meteorological Department**

PRESS RELEASE-1

Time of issue: 1300 hours IST

Dated: 03-01-2019

Sub: Cyclonic storm “PABUK” over South China Sea and its emergence into Andaman Sea on 05th January 2019: Pre-cyclone watch for Andaman Islands

A cyclonic storm “PABUK” lay centred at 0830 hours IST of 03rd January 2019 over south China Sea near latitude 6.0°N and longitude 105.0° E, about 1500 km east-southeast of Port Blair. It is very likely to move west-northwestwards and emerge into Andaman Sea around the forenoon of 05th January 2019. Thereafter it is very likely to move northwestwards and cross Andaman Islands around evening/ night of 06th January. Thereafter, it is very likely to move north-northwestwards and then recurve northeastwards towards Myanmar coast and weaken further during 7th-8th January, 2019.

Warnings:

(i) Heavy rainfall warning

- Rainfall at many places with heavy falls at isolated places likely to commence over Andaman Islands from 5th January evening. Intensity is very likely to increase with rainfall at most places and heavy to very heavy rainfall at a few places on 6th and at isolated places on 7th.

(ii) Wind warning

Squally wind speed reaching 40-50 kmph gusting to 60 kmph is likely to commence over Andaman Sea along and off south Myanmar and Thailand coast from 4th January evening. It is very likely to increase gradually becoming 55-65 kmph gusting to 75 over Andaman Sea on 5th and over Andaman Islands, Andaman Sea and adjoining areas of eastcentral and southeast Bay of Bengal on 6th and 7th.

(iii) Sea condition

The sea condition will be rough to very rough over Andaman Sea along and off south Myanmar and Thailand coast from 4th January evening. It is very likely to become very rough to high over Andaman Sea on 5th and over Andaman Sea and adjoining areas of eastcentral and southeast Bay of Bengal on 6th and 7th.

(iv) Fishermen Warning

The fishermen are advised not to venture into Andaman Sea during 4th-7th and into adjoining southeast and eastcentral Bay of Bengal during 6-7th January.

The system is under continuous surveillance and concerned state governments are being informed regularly.

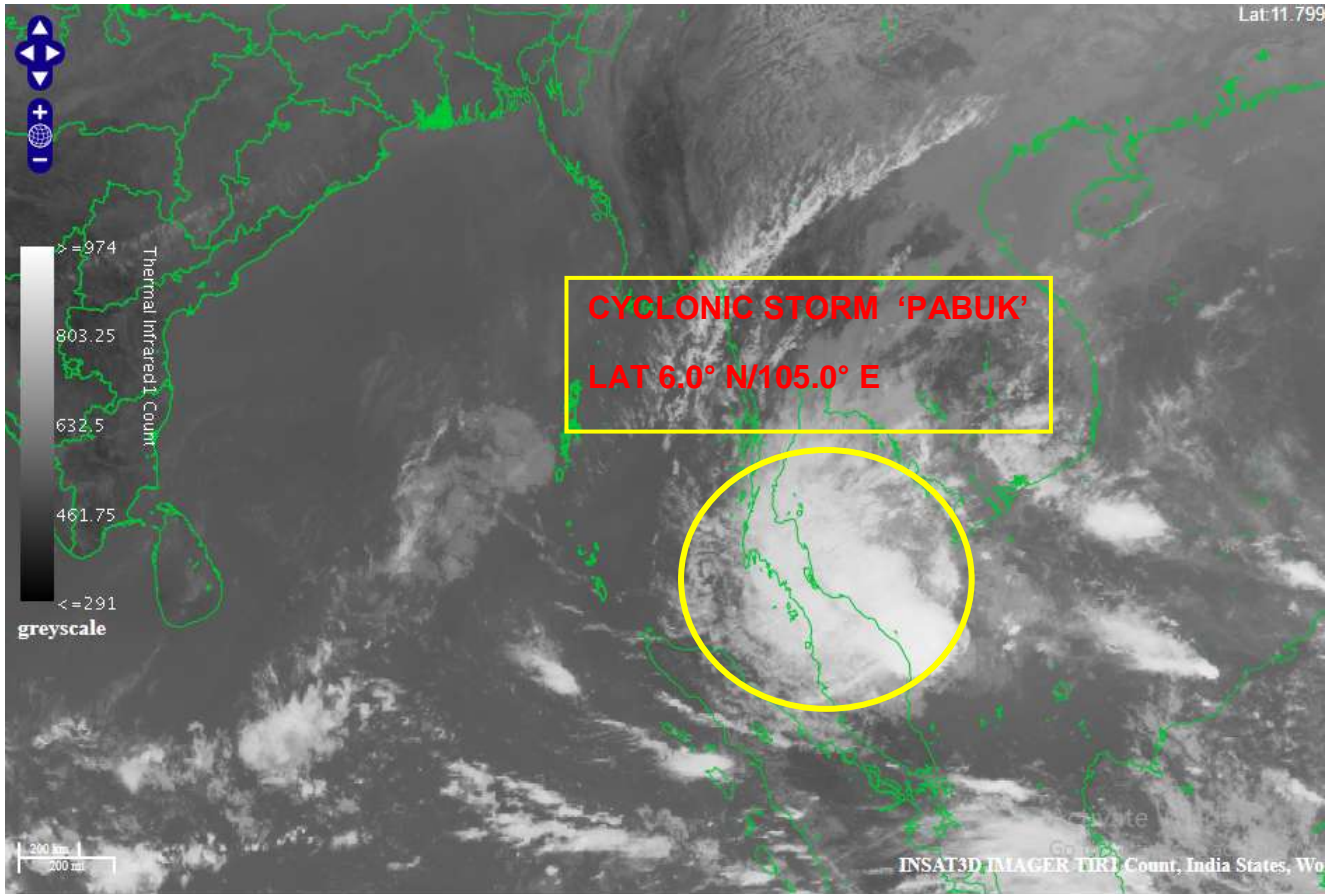
Kindly visit www.imd.gov.in and www.rsmcnewdelhi.imd.gov.in for updates on the system.

**Contact: Cyclone Warning Division, Office of the Director General of Meteorology,
India Meteorological Department, Ministry of Earth Sciences.**

Phone: (91) 11-24652484, FAX: (91) 11-24643128, 24623220, E-mail: cwdhq2008@gmail.com, Website: rsmcnewdelhi.imd.gov.in

Spatial rainfall distribution: Isolated: <25%, A few: 26-50%, Many: 51-75%, Most: 76-100%

Rainfall amount (mm): Heavy rain: 64.5 – 115.5, Very heavy rain: 115.6 – 204.4, Extremely heavy rain: 204.5 or more.



Contact: Cyclone Warning Division, Office of the Director General of Meteorology,
India Meteorological Department, Ministry of Earth Sciences.

Phone: (91) 11-24652484, FAX: (91) 11-24643128, 24623220, E-mail: cwdhq2008@gmail.com, Website: rsmcnewdelhi.imd.gov.in

Spatial rainfall distribution: Isolated: <25%, A few: 26-50%, Many: 51-75%, Most: 76-100%

Rainfall amount (mm): Heavy rain: 64.5 – 115.5, Very heavy rain: 115.6 – 204.4, Extremely heavy rain: 204.5 or more.