



India Meteorological Department
Earth System Science Organisation
(Ministry of Earth Sciences)

BULLETIN NO. : 01 (ARB 02/2018)

TIME OF ISSUE: 1945 HOURS IST

DATED: 16.05.2018

FROM: INDIA METEOROLOGICAL DEPARTMENT (FAX NO. 24643965/24699216/24623220)

TO: CONTROL ROOM, NDM, MINISTRY OF HOME AFFAIRS (FAX.NO. 23093750)
CONTROL ROOM NDMA (FAX.NO. 26701729)
CABINET SECRETARIAT (FAX.NO.23012284, 23018638)
PS TO HON'BLE MINISTER FOR S & T AND EARTH SCIENCES (FAX NO.23316745)
SECRETARY, MOES, (FAX NO. 24629777)
H.Q. (INTEGRATED DEFENCE STAFF AND CDS) (FAX NO. 23005137/23005147)
DIRECTOR GENERAL, DOORDARSHAN (23385843)
DIRECTOR GENERAL, AIR (23421105, 23421219)
PIB MOES (FAX NO. 23389042)
UNI (FAX NO. 23355841)
D.G. NATIONAL DISASTER RESPONSE FORCE (NDRF) (FAX NO. 26105912)
DIRECTOR, PUNCTUALITY, INDIAN RAILWAYS (FAX NO. 23388503)
CHIEF SECRETARY, TAMILNADU (FAX NO. 044-25672304)
CHIEF SECRETARY, KERALA (FAX NO. 0471-2327176)
ADMINISTRATOR, LAKSHADWEEP ISLANDS (FAX NO. 04896-262184)
ADMINISTRATOR, UNION TERRITORY OF DAMAN & DIU AND DADRA NAGAR HAVELI (0260-2230775)
CHIEF SECRETARY, KARNATAKA (FAX NO. 080-22258913)
CHIEF SECRETARY, GOA (FAX NO. 0832-2415201)
CHIEF SECRETARY, MAHARASHTRA (FAX NO. 022- 22028594)
CHIEF SECRETARY, GUJARAT (FAX NO. 079-23250305)

Sub: Depression over Gulf of Aden

Latest observations and satellite imageries indicate that a depression has formed over Gulf of Aden and lay centred at 1730 hrs IST of today, the 16th May 2018 near latitude 13.0°N and longitude 50.0°E, about 540 km eastnortheast of Aden (Yemen) (41840) and 420 km west-northwest of Socotra Islands. It is very likely to intensify further into a deep depression during next 24 hrs. It is very likely to move initially west-northwestwards towards Yemen coast during next 24 hrs and then west-southwestwards during subsequent 48 hrs.

Warning

(a) Wind

Squally winds speed reaching 45-55 kmph gusting to 65 kmph is very likely around the system centre covering Gulf of Aden and adjoining areas of westcentral and southwest Arabian Sea during the next 48 hrs.

(b) Sea condition

Sea condition will be rough to very rough around the system centre covering Gulf of Aden and adjoining areas of westcentral and southwest Arabian Sea during the next 48 hrs.

(c) Fishermen warning

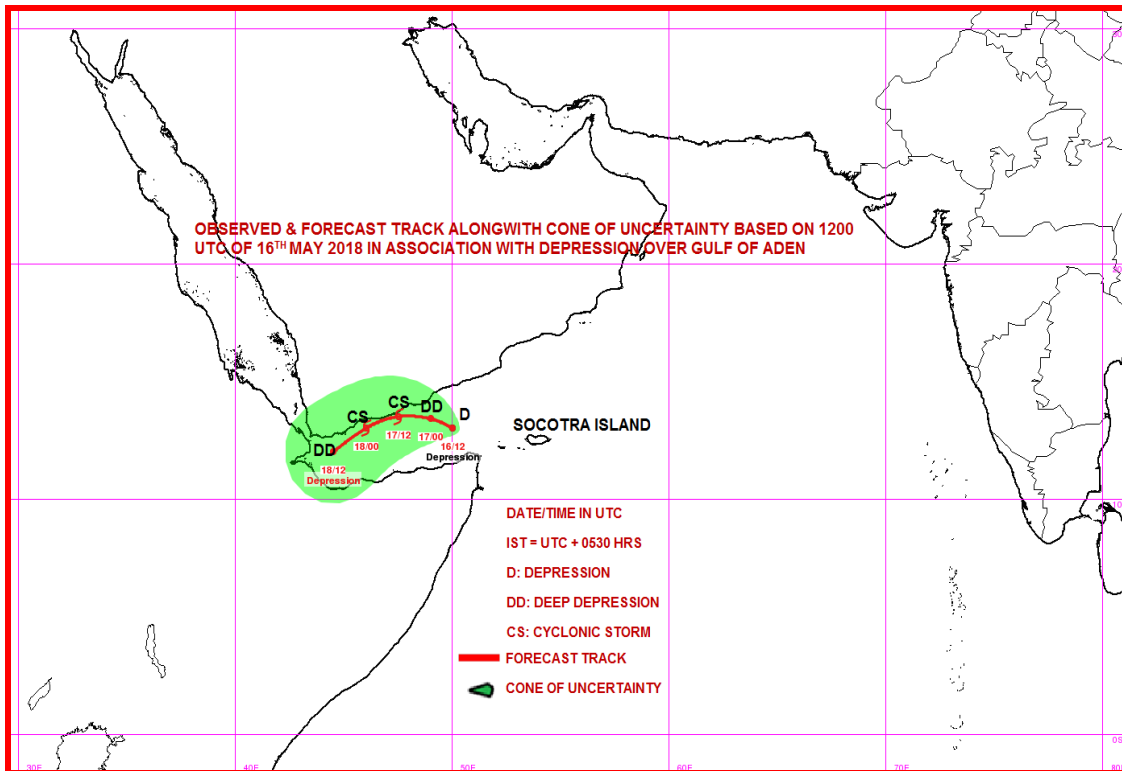
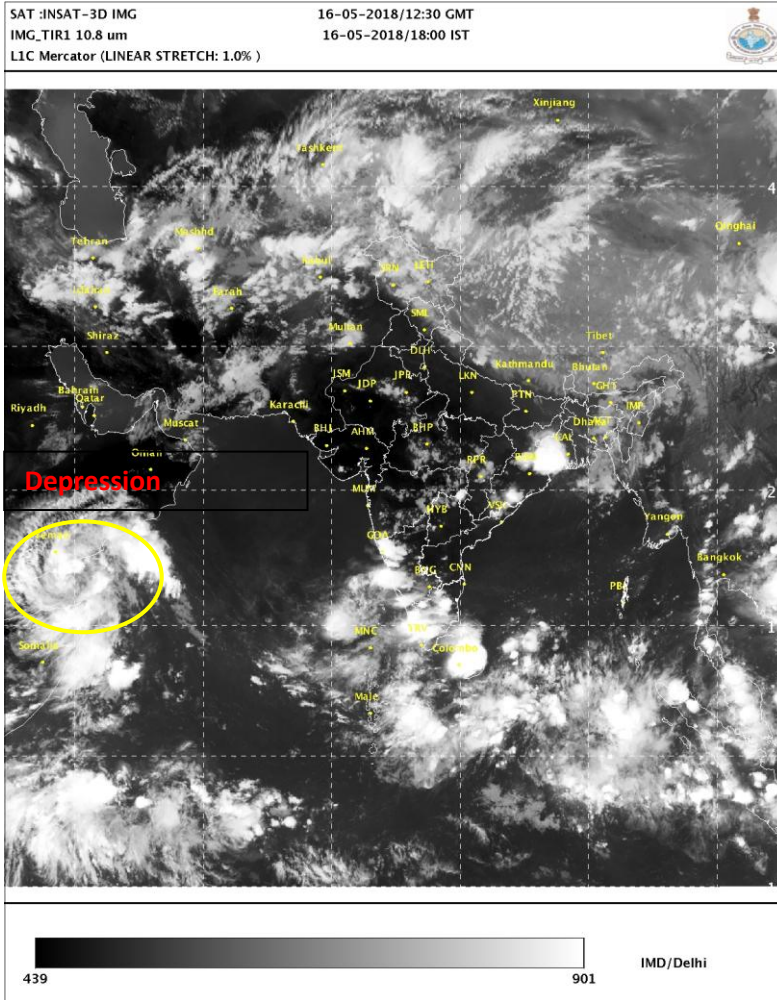
Fishermen are advised not to venture into Gulf of Aden and adjoining areas of westcentral and southwest Arabian Sea during the next 48 hrs.

The next bulletin will be issued at 0230 hrs IST of 17th May 2018.

(Neetha K Gopal)
Scientist-E, RSMC, New Delhi

Copy to: CRS, Pune/ ACWC Chennai/ Mumbai/MC Goa/Thiruvananthapuram/Bengaluru/CWC Ahmedabad.

Spatial rainfall distribution: Isolated: <25%, A few: 26-50%, Many: 51-75%, Most: 76-100%
Rainfall amount (mm): Heavy rain: 64.5 – 115.5, Very heavy rain: 115.6 – 204.4, Extremely heavy rain: 204.5 or more.



Spatial rainfall distribution: Isolated: <25%, A few: 26-50%, Many: 51-75%, Most: 76-100%
 Rainfall amount (mm): Heavy rain: 64.5 – 115.5, Very heavy rain: 115.6 – 204.4, Extremely heavy rain: 204.5 or more.