



India Meteorological Department  
Earth System Science Organisation  
(Ministry of Earth Sciences)

**BULLETIN NO. : 14 (BOB 07/2017)**

**TIME OF ISSUE: 0830 HOURS IST**

**DATED: 01.12.2017**

**FROM: INDIA METEOROLOGICAL DEPARTMENT (FAX NO. 24643965/24699216/24623220)**

**TO: CONTROL ROOM, NDM, MINISTRY OF HOME AFFAIRS (FAX.NO. 23093750)**

**CONTROL ROOM NDMA (FAX.NO. 26701729)**

**CABINET SECRETARIAT (FAX.NO.23012284)**

**PS TO HON'BLE MINISTER FOR S & T AND EARTH SCIENCES (FAX NO.23316745)**

**SECRETARY, MOES, (FAX NO. 24629777)**

**SECRETARY, DST (FAX NO. 26863847/-2418)**

**H.Q. (INTEGRATED DEFENCE STAFF AND CDS) (FAX NO. 23005137/23005147)**

**DIRECTOR GENERAL, DOORDARSHAN (23385843)**

**DIRECTOR GENERAL, AIR (25843825)**

**PIB MOES (FAX NO. 23389042)**

**UNI (FAX NO. 23355841)**

**D.G. NATIONAL DISASTER RESPONSE FORCE (NDRF) (FAX NO. 26105912)**

**CHIEF SECRETARY, GOVT.OF KERALA (FAX NO. 0471-2518006)**

**CHIEF SECRETARY, GOVT.OF TAMIL NADU ((FAX NO. 044-25672304)**

**CHIEF ADMINISTRATOR, LAKHADWEEP ISLANDS (FAX NO. 04896-262184)**

**CHIEF SECRETARY, GOVT.OF PUDUCHERRY (FAX NO. 0413-2337575)**

**DIRECTOR, PUNCTUALITY, INDIAN RAILWAYS (FAX NO. 23388503)**

**Sub: Severe Cyclonic Storm 'OCKHI' over Southeast Arabian Sea and Cyclone Warning for Kerala and Lakshadweep Islands- RED message**

The cyclonic storm 'OCKHI' over Southeast Arabian Sea continued to move west-northwestwards with a speed of 17 kmph during past 06 hours, intensified into a severe cyclonic storm and lay centred at 0530 hrs IST of today, the 01<sup>st</sup> December, 2017 over southeast Arabian Sea near Latitude 8.8° N and Longitude 74.0° E, about 110 km north-northeast of Minicoy and 290 km southeast of Amini Divi. The system is very likely to intensify further during next 24 hours. It is very likely to continue to move west-northwestwards across Lakshadweep Islands during next 24 hours and then move north/northeastwards during the subsequent 48 hours.

Date/Time(IST)	Position (Lat. °N/ long. °E)	Maximum sustained surface wind speed (kmph)	Category of cyclonic disturbance
01/0530	8.8/74.0	90-100 GUSTING TO 110	SEVERE CYCLONIC STORM
01/1130	9.3/73.3	95-105 GUSTING TO 115	SEVERE CYCLONIC STORM
01/1730	9.7/72.6	100-110 GUSTING TO 120	SEVERE CYCLONIC STORM
01/2330	10.1/71.9	105-115 GUSTING TO 125	SEVERE CYCLONIC STORM
02/0530	10.5/71.2	110-120 GUSTING TO 130	SEVERE CYCLONIC STORM
02/1730	11.5/69.8	110-120 GUSTING TO 130	SEVERE CYCLONIC STORM
03/0530	12.6/68.5	105-115 GUSTING TO 125	SEVERE CYCLONIC STORM
03/1730	13.7/67.8	100-110 GUSTING TO 120	SEVERE CYCLONIC STORM
04/0530	14.8/67.8	90-100 GUSTING TO 110	SEVERE CYCLONIC STORM
04/1730	16.0/68.4	80-90 GUSTING TO 100	CYCLONIC STORM
05/0530	17.2/69.2	70-80 GUSTING TO 90	CYCLONIC STORM
05/1730	18.4/69.8	60-70 GUSTING TO 80	CYCLONIC STORM
06/0530	19.6/70.4	50-60 GUSTING TO 70	DEEP DEPRESSION

**Warning:**

**(i) Heavy Rainfall warning:**

- Rainfall at most places with heavy to very heavy rainfall at a few places and isolated extremely heavy falls (>20 cm) very likely over Lakshadweep area during next 24 hours and isolated heavy to very heavy falls during subsequent 24 hours.

**Spatial rainfall distribution: Isolated: <25%, A few: 26-50%, Many: 51-75%, Most: 76-100%**

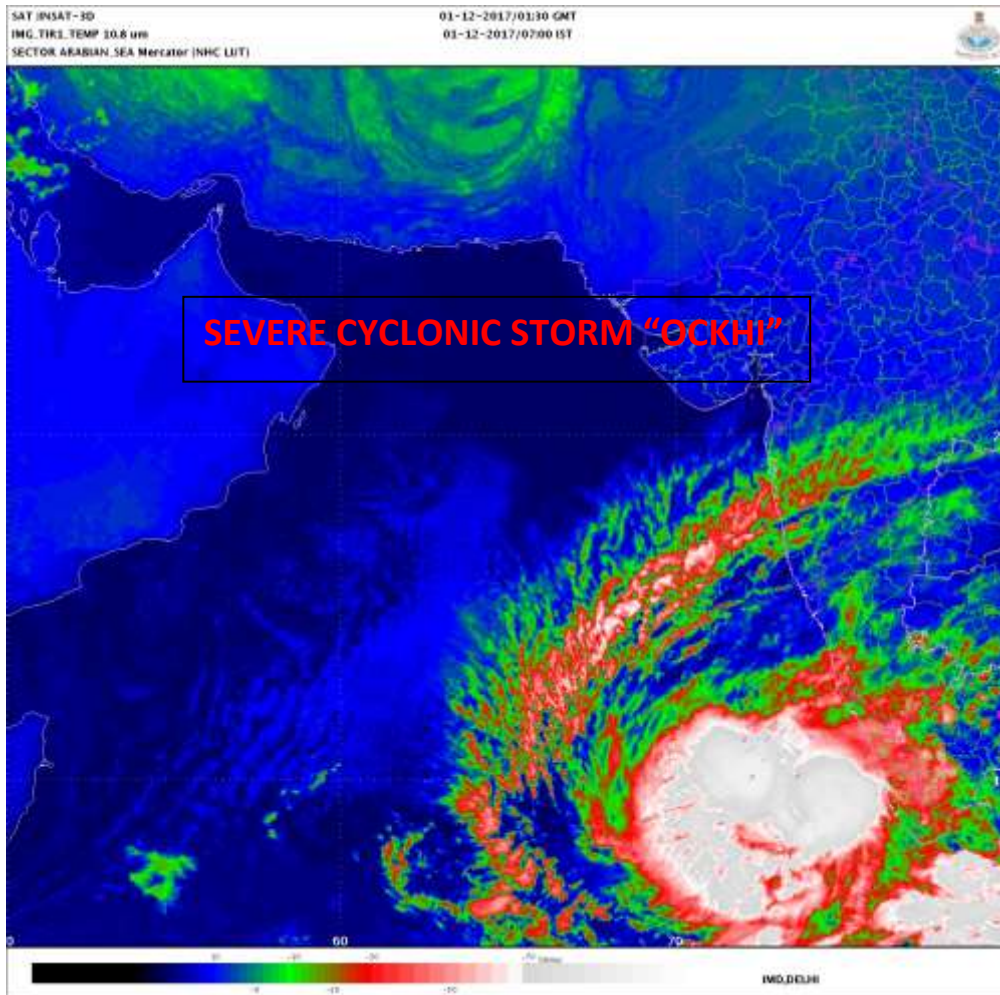
**Rainfall amount (mm): Heavy rain: 64.5 – 115.5, Very heavy rain: 115.6 – 204.4, Extremely heavy rain: 204.5 or more.**

- Rainfall at many places with heavy rainfall at isolated places very likely over Kerala during next 24 hours.
- (ii) **Wind warning:**
- Gale winds speed reaching 110-120 kmph gusting to 130 kmph very likely over & around Lakshadweep Islands during next 24 hours and gradual decrease thereafter.
  - Squally wind speed reaching 45-55 kmph gusting to 65 kmph very likely along & off Kerala during next 24 hours and along & off Karnataka coast during next 24 hours.
- (ii) **Sea condition:**
- Sea conditions would be high to very high over and around Lakshadweep Islands during next 24 hours and high during subsequent 24 hours.
  - Sea conditions would be high to very high along & off Kerala coast during next 24 hours and along & off Karnataka coast during subsequent 24 hours.
- (iii) **Damage Expected over Lakshadweep Islands:** Damage to power and communication lines due to breaking of tree branches and uprooting of large avenue trees. Major damage to thatched houses/huts: Major damage to kutcha houses, some damage to pucca roads and flooding of escape routes. Damage to banana & Papaya trees and standing crops.
- (iv) **Storm surge:**
- Storm surge of about 1 meter above astronomical tides very likely to inundate low lying areas of Lakshadweep Islands.
- (v) **Action suggested**
- **Lakshadweep Islands:** Fishermen along & off Lakshadweep Islands are advised not to venture into the sea during next 48 hours.
  - **Kerala & Karnataka coast:** Fishermen are advised not to venture into the sea along & off Kerala & Karnataka coast during next 48 hrs.

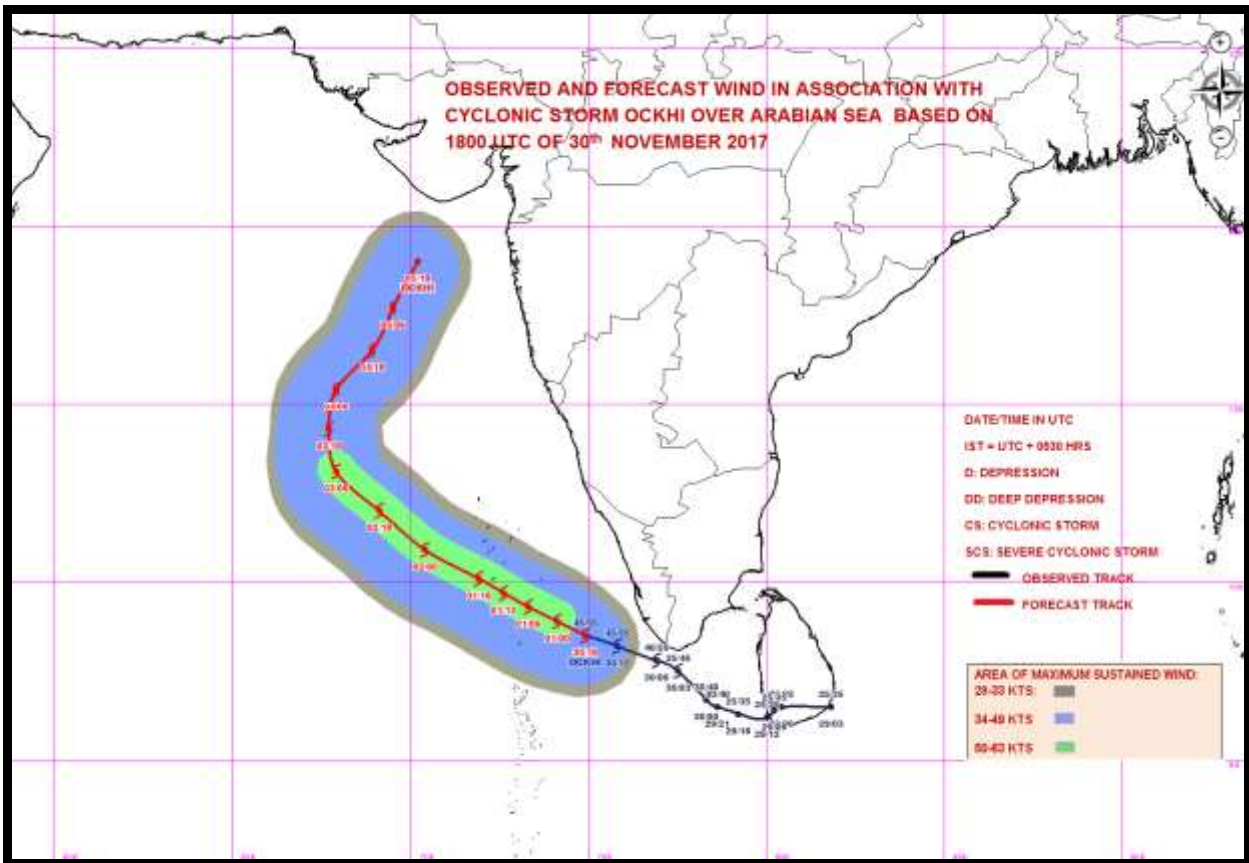
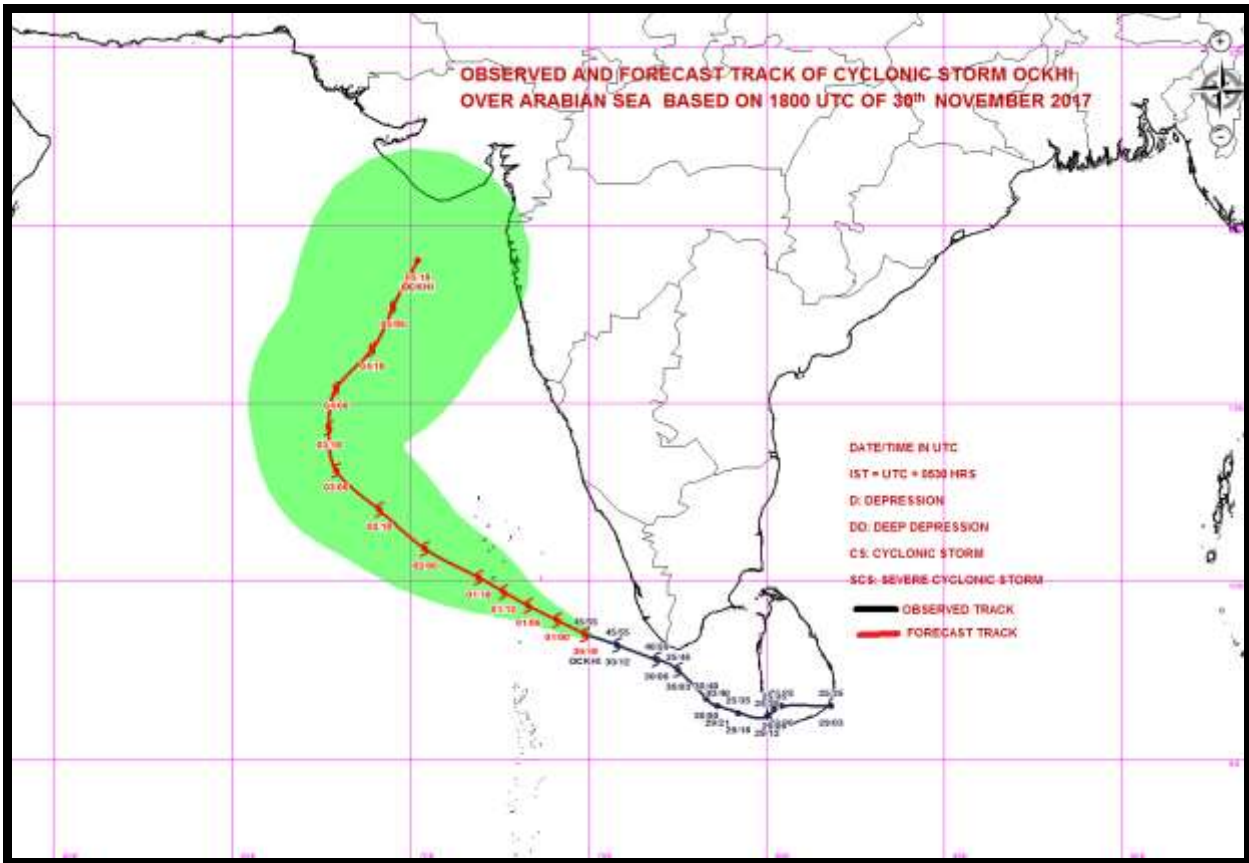
**The next bulletin will be issued at 1130 hrs IST of 01<sup>st</sup> December 2017.**

**(SHIBIN B)**  
**Scientist-B, RSMC, New Delhi**

*Copy to: CRS, Pune/ ACWC Chennai/ MC Thiruvananthapuram/ MC Begaluru.*



**Spatial rainfall distribution: Isolated: <25%, A few: 26-50%, Many: 51-75%, Most: 76-100%**  
**Rainfall amount (mm): Heavy rain: 64.5 – 115.5, Very heavy rain: 115.6 – 204.4, Extremely heavy rain: 204.5 or more.**



**Spatial rainfall distribution: Isolated: <25%, A few: 26-50%, Many: 51-75%, Most: 76-100%**  
**Rainfall amount (mm): Heavy rain: 64.5 – 115.5, Very heavy rain: 115.6 – 204.4, Extremely heavy rain: 204.5 or more.**