



India Meteorological Department
Earth System Science Organisation
(Ministry of Earth Sciences)

BULLETIN NO. : 17 (BOB 05/2017)

TIME OF ISSUE: 0800 HOURS IST

DATED: 22.10.2017

FROM: INDIA METEOROLOGICAL DEPARTMENT (FAX NO. 24643965/24699216/24623220)

TO: CONTROL ROOM, NDM, MINISTRY OF HOME AFFAIRS (FAX.NO. 23093750)
CONTROL ROOM NDMA (FAX.NO. 26701729)
CABINET SECRETARIAT (FAX.NO.23793144)
PS TO HON'BLE MINISTER FOR S & T AND EARTH SCIENCES (FAX NO.23316745)
SECRETARY, MOES, (FAX NO. 24629777)
SECRETARY, DST (FAX NO. 26863847/-2418)
H.Q. (INTEGRATED DEFENCE STAFF AND CDS) (FAX NO. 23005137/23005147)
DIRECTOR GENERAL, DOORDARSHAN (23385843)
DIRECTOR GENERAL, AIR NEWS (FAX NO. 011-23421219)
PIB MOES (FAX NO. 23389042)
UNI (FAX NO. 23355841)
D.G. NATIONAL DISASTER RESPONSE FORCE (NDRF) (FAX NO. 26105912)
CHIEF SECRETARY, GOVT.OF WEST BENGAL (033-22144328)
CHIEF SECRETARY, GOVT.OF ASSAM (0361-2260900)
CHIEF SECRETARY, GOVT.OF MEGHALAYA (0364-2225978)
CHIEF SECRETARY, GOVT.OF MIZORAM (0389-2322745)
CHIEF SECRETARY, GOVT.OF TRIPURA (0381-2414013)
CHIEF SECRETARY, GOVT.OF NAGALAND (0370-2270071)
CHIEF SECRETARY, GOVT.OF MANIPUR (0385-2452629)
CHIEF SECRETARY, GOVT.OF ARUNACHAL PRADESH (0360-2212446, 2215719)
DIRECTOR, PUNCTUALITY, INDIAN RAILWAYS (FAX NO. 23388503)

Sub: Depression over Bangladesh weakened into a Well Marked Low

The depression over Bangladesh moved east-northeastwards during past six hours and weakened into a well marked low pressure area over northeast Bangladesh and adjoining Meghalaya & South Assam at 0530 hrs IST of today, the 22nd October 2017. The system is very likely to move east-northeastwards and weaken further.

Light to moderate rainfall is very likely at many places over Nagaland, Manipur, Mizoram, Tripura and at a few places over Assam, Meghalaya and Arunachal Pradesh during next 24 hours.

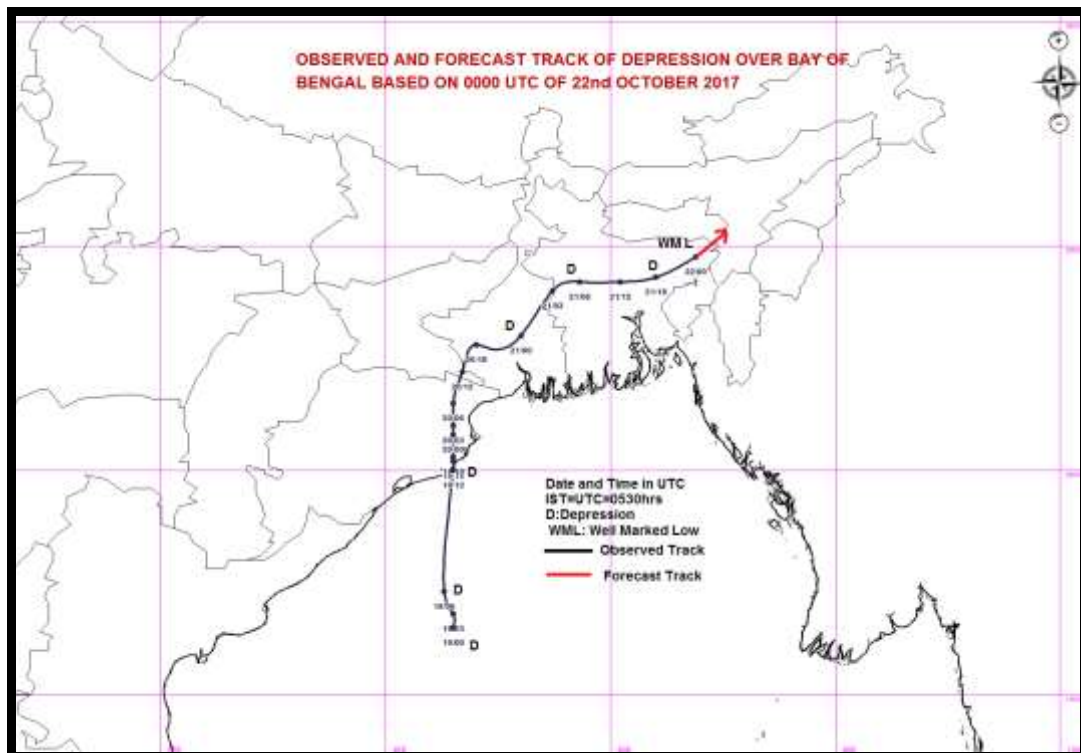
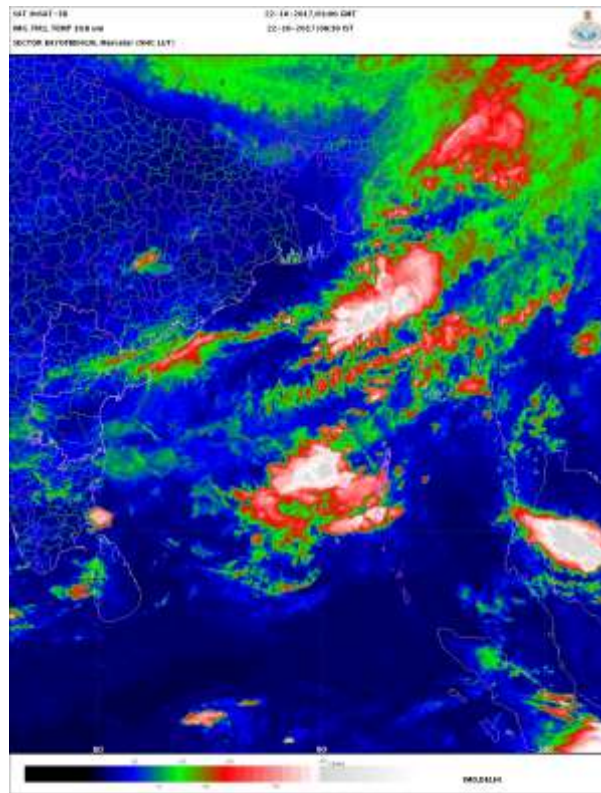
This is the last bulletin for this system.

(SHIBIN.B)

Scientist-B, NWFC, New Delhi

Copy to: CRS, Pune/ ACWC Kolkata /ACWC Chennai/CWC Vishakhapatnam/CWC Bhubaneswar/MC Hyderabad/Ranchi, RMC Guwahati.

Spatial rainfall distribution: Isolated: <25%, A few: 26-50%, Many: 51-75%, Most: 76-100%
Rainfall amount (mm): Heavy rain: 64.5 – 115.5, Very heavy rain: 115.6 – 204.4, Extremely heavy rain: 204.5 or more.



Spatial rainfall distribution: Isolated: <25%, A few: 26-50%, Many: 51-75%, Most: 76-100%
 Rainfall amount (mm): Heavy rain: 64.5 – 115.5, Very heavy rain: 115.6 – 204.4, Extremely heavy rain: 204.5 or more.